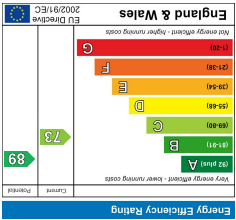


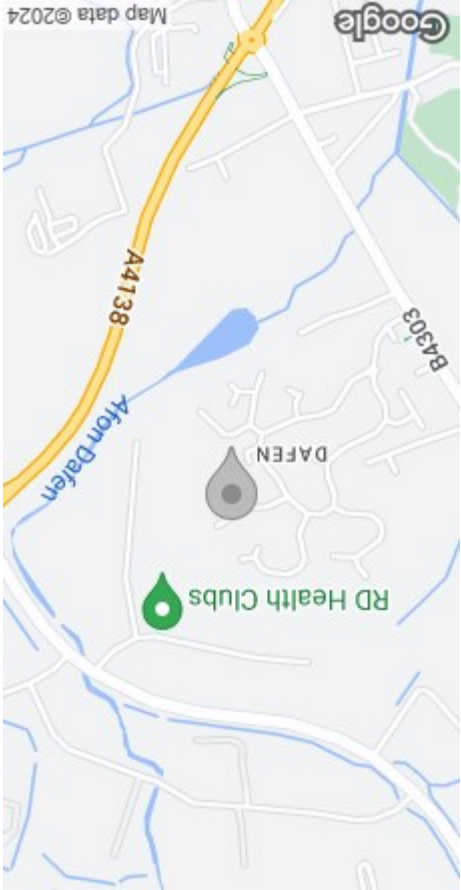
These particulars, whilst believed to be accurate are set out as a general outline only for guidance and do not constitute any part of an offer or contract. Intending purchasers should not rely on them as statements or representations of fact, but must satisfy themselves by inspection or otherwise as to their accuracy. No person in this firm's employment has the authority to make or give any representation or warranty in respect of the property.

Whilst every attempt has been made to ensure the accuracy of the floorplan contained here, measurements of doors, windows, rooms and any other items are approximate and no responsibility is taken for any error, omission or misstatement. This plan is for illustrative purposes only and should be used as such by any prospective purchaser. The services, systems and appliances shown have not been tested and no guarantee as to their operability or efficiency can be given.

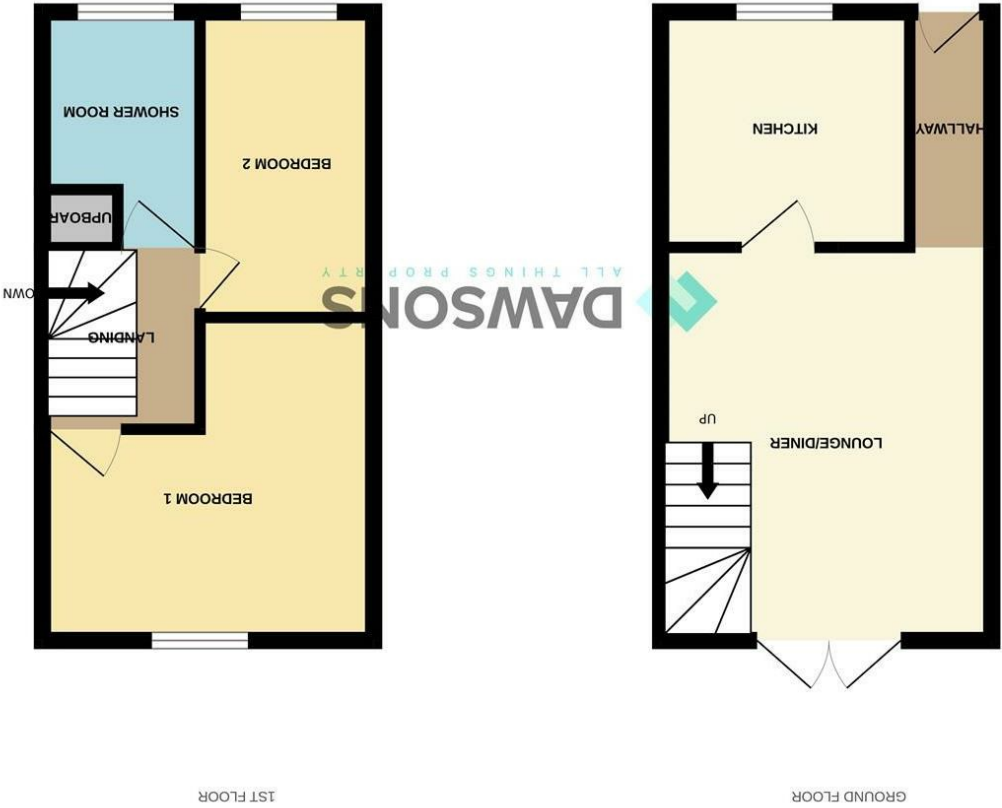
Made with Metropix v2024



EPC



AREA MAP



FLOOR PLAN



65 Clos Cilsaig  
Dafen, Llanelli, SA14 8QY  
Offers Around £110,000

2 1 1 C



GENERAL INFORMATION

Welcome to this charming mid link house located in the sought-after area of Clos Cilsaig, Dafen, Llanelli. This modern property boasts a cosy lounge/dining room that seamlessly flows into the kitchen, creating a perfect space for entertaining guests or relaxing with your loved ones.

With two bedrooms and a first-floor shower room, this home offers a comfortable living arrangement for individuals, couples, or small families. The enclosed rear garden provides a lovely outdoor space for al fresco dining or simply enjoying the fresh air.

Conveniently situated close to amenities and the hospital, this property is ideal for first-time buyers looking to step onto the property ladder or for those seeking to downsize without compromising on comfort and style.

Don't miss out on the opportunity to make this house your home sweet home in the heart of Llanelli. Contact us today to arrange a viewing and start envisioning your life in this delightful property.

FULL DESCRIPTION

ENTRANCE

LOUNGE/DINING ROOM

light and airy lounge/dining room that opens up with UPVC French doors on to the garden and patio.

KITCHEN

The kitchen has the room for all modern white goods, fitted units with work surfaces over, wall mounted boiler.

FIRST FLOOR

LANDING

Storage cupboard and loft access.

BEDROOM 1

Facing the rear of the property with outlook over the rear garden.



BEDROOM 2

Situated to the front of the property.

SHOWER ROOM

EXTERNAL

Enclosed rear garden.

